



# UniPrint™ Gateway Terminal Server Edition

The total solution for Microsoft server-based printing

Many enterprise-level organizations, especially those with global offices, operate within a Server-based Computing (SbC) environment; or in the latest term, application virtualization environment. These global companies commonly use Windows as the platform, and Microsoft Terminal Services to deliver applications to their workforce.

A Microsoft SbC environment offers many benefits for system management and application distribution. However, in any SbC enterprise environment, you are bound to face some print-related issues. From managing a multitude of printer drivers for various network and personal printers in dispersed locations; to dealing with slow printing and unstable access especially when remote users access over low bandwidth connections – the challenges are many. Communication errors, printer server crashes, slow printing, disrupted user access and more – all threaten to drag down the entire network

performance. You may also find printing for thin-client users to be an issue.

UniPrint Gateway Terminal Server Edition (TSE) enhances the benefits of Microsoft SbC, providing a software-based total printing solution for all clients. One Portable Document Format (PDF)-based universal printer driver solves all printer driver incompatibility and management issues. The printer driver also compresses print data to PDF files, saving bandwidth consumption, and ultimately delivering faster and more consistent printing.

UniPrint Gateway TSE manages printing on behalf of thin clients, enabling “client-less” printing. Additionally, it allows system administrators to remotely deploy, and centrally manage all printers and printing functions across the network from the data center. No more costly and time-consuming trips to branch offices. Microsoft network printing has never been easier, more productive or more cost effective!

how the world prints

# UniPrint™ Gateway Terminal Server Edition

## Enhanced Printing in Microsoft SbC Environments

UniPrint Gateway TSE enables easy access, fast printing and secure delivery for all clients in Microsoft SbC environments. Administrators need only to install a single universal printer driver on the Terminal Server, regardless of various printer makes or models, networked or locally-attached. Users can access their respective printers using Active Directory. Printing in the office, from your home or any remote site is easy and seamless to the user.

## Improving Server Stability

UniPrint Gateway TSE is specifically designed for complex enterprise environments. One universal printer driver replaces all manufacturer printer drivers on the terminal server. Printer driver incompatibility is solved, virtually eliminating server instability issues routinely found when printing in SbC environments.

## Optimizing Bandwidth Availability

Large print formats – such as PCL, PostScript and others – sent across low bandwidth connections often slow down printing, and can bring application access to a halt. With UniPrint Gateway TSE, print data is compressed by over

90% into PDF-based print jobs. Not only is the print job size significantly reduced, but now users can preview, e-mail or archive the print document in PDF format.

## Remote Deployment and Centralized Management

Administrators can remotely deploy any UniPrint component using Active Directory Software Installation Policies. Once UniPrint Gateway TSE is up and running, all printer management can be handled from the Spool Server in the data center. No more costly and time-consuming travelling to branch offices to perform server administration.

## Enabling Printing for All Clients

UniPrint Gateway TSE enhances Microsoft SbC printing in heterogeneous client environments. The UniPrint Spool Server virtually removes the need for printer drivers on both the clients and Terminal Server. With “client-less” printing, thin-client users can print as easily as fat-client users.

## Fast Printing and Secure Delivery

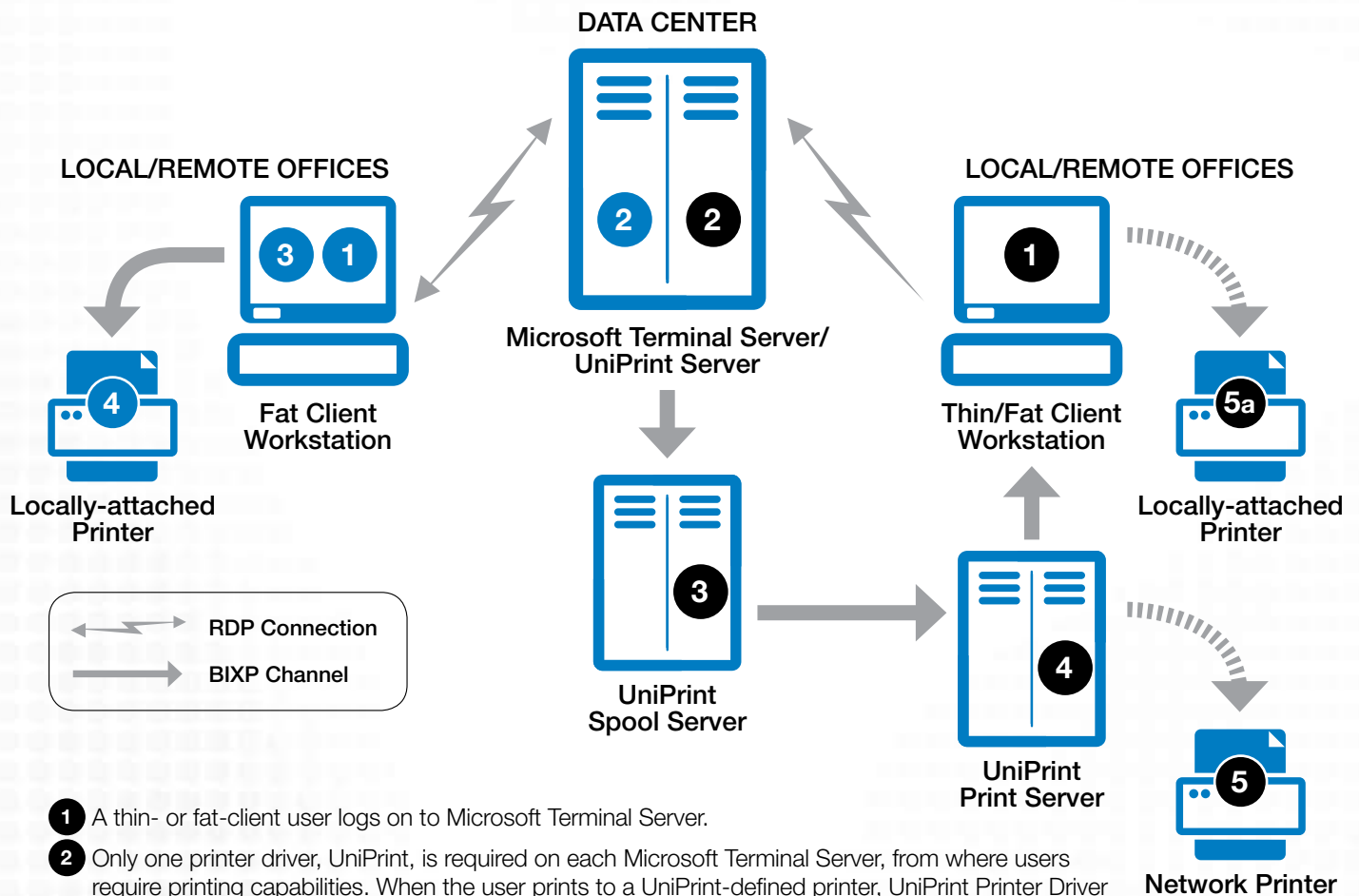
The UniPrint Bi-directional Information eXchange Protocol (BIXP) provides a direct and encrypted channel for the speedy transfer of compressed PDF print data, enabling secure delivery and even faster print speed.

## KEY BENEFITS & FEATURES

- Supports thin and fat, local and remote clients connecting to Microsoft Terminal Services
- Enables easy access, fast printing, and secure delivery
- Solves all printer driver incompatibility issues with one universal printer driver
- Enhances server stability
- Converts print data to PDF files for previewing, e-mailing as an attachment, archiving and printing
- PDF conversion saves up to 90% bandwidth consumption
- Allows remote deployment and centralized management across the network

# How UniPrint™ Gateway TSE Works

This diagram illustrates the flow of data from application to printer for thin and fat clients.



- 1 A thin- or fat-client user logs on to Microsoft Terminal Server.
- 2 Only one printer driver, UniPrint, is required on each Microsoft Terminal Server, from where users require printing capabilities. When the user prints to a UniPrint-defined printer, UniPrint Printer Driver converts the print data into a compressed PDF print job.
- 3 & 4 Using the UniPrint BIXP channel, the PDF print job is transferred through the Spool Server, to the appropriate Print Server, to print to a network printer 5. Alternatively, from the Print Server, the print job can be sent back to the client's workstation, to print to a locally-attached printer 5a.
- 1 A fat client logs on to Microsoft Terminal Server.
- 2 When the user prints to a UniPrint-defined printer, UniPrint Printer Driver converts the print data into a compressed PDF print job.
- 3 & 4 Through RDP virtual channel, the PDF print job is transferred back to the user's computer to print to any locally-attached printer.

- Enables "client-less" printing to networked and locally-attached printers
- Provides end-to-end print data protection
- Easy to install and use, requiring no special training
- Available for 32-bit and 64-bit architectures
- Integrates seamlessly with other UniPrint products to support all operation systems and client devices

how the world prints



## UniPrint™

UniPrint is a recognized leader in the development of software-based solutions for streamlining business processes.

The award-winning UniPrint Suite of Products provides a comprehensive range of enhanced-printing solutions for server-based, virtualized, and mainframe environments, and are compatible with all systems, client platforms and devices.

At UniPrint, we innovate to bring the right solution to our clients each and every time. Our mission is to develop solutions that best fit our clients' business needs, and that has been the key to our success.

### **UniPrint**

1 Eva Road, Suite 309  
Toronto, Ontario  
Canada M9C 4Z5

Worldwide: (416) 503-9800

North America Toll Free: 1 (866) 488-3188

Europe, Middle East & Africa: (44) (0) 1344 206146

Fax: (416) 503-3113

[www.uniprint.net](http://www.uniprint.net)

---

**Try UniPrint  
Gateway Terminal  
Server Edition today!**

Visit [www.uniprint.net](http://www.uniprint.net)  
for a FREE 30-day trial,  
and for information on  
other UniPrint products.

---